

WELCOME TO KOHINOOR METALLICS



**EMERGING LEADER IN
MANUFACTURERS OF CAST IRON & DUCTILE IRON CASTING
WITH PRECISE MACHINING**

ABOUT US

Overview:

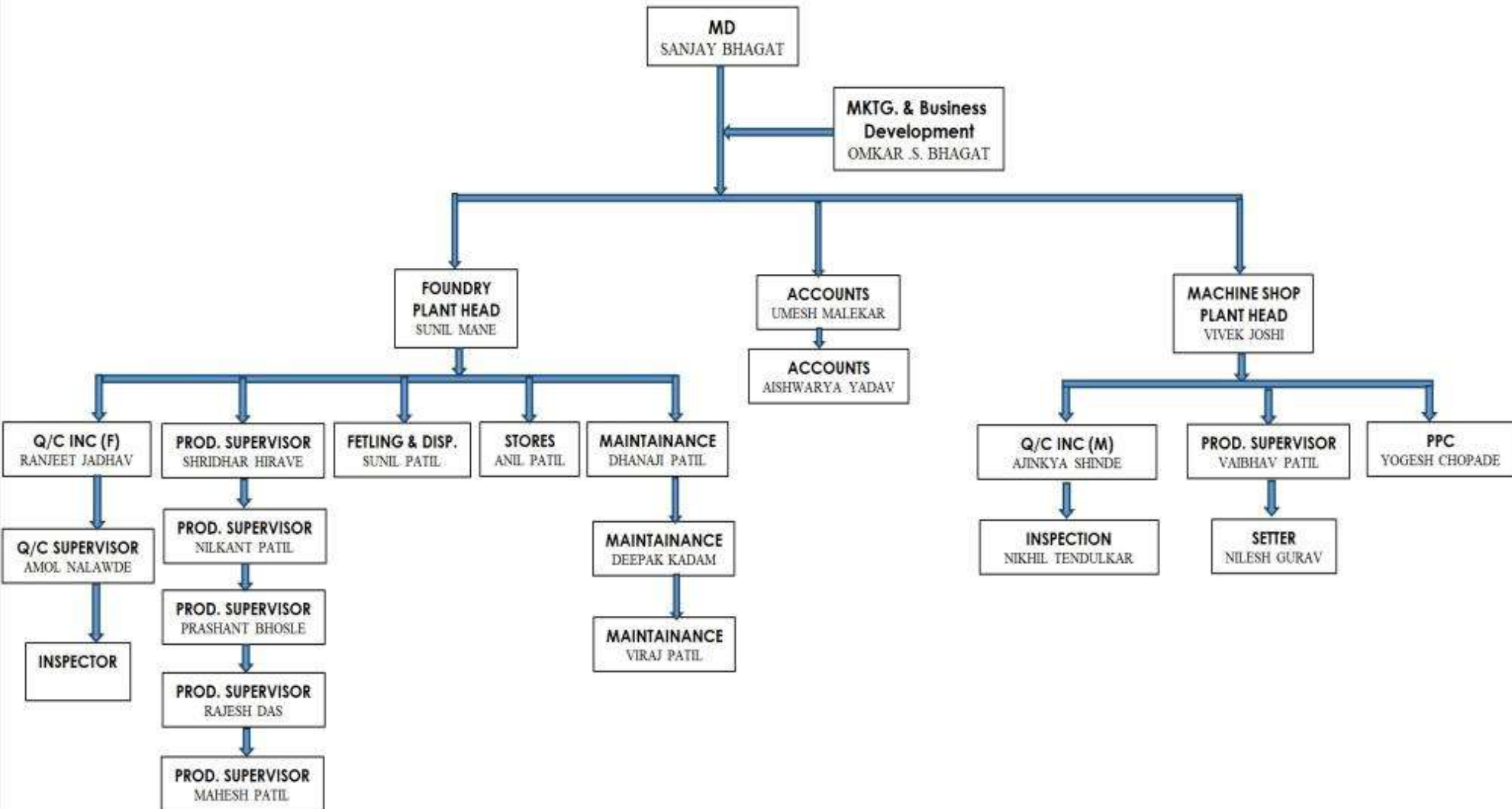
- Established in 2005. Almost 2 decade's experience
- Expertise in Pumps & Actuators with regular supp Machined-cast-components.
- Also we are supplying Castings in Various sectors Automobile, Farm & Machinery, Power transmissi more.
- Export Contributes to over 20% of our revenue
- Second Generation has joined



NAME OF COMPANY	Kohinoor Metallica
CONSTITUTION	Partnership
KEY PERSON	Sanjay Bhagat
POSTAL ADDRESS	Plot No. 31 Opp. SBI MIDC Shirol, Kolhapur (Maharashtra) India. PIN 416122
CONTACT NOS.	+91 - 9922571999 / +91 - 9763707796
EMAIL ADDRESS	kohinoormetallica@gmail.com shramik8@gmail.com
PAN No.	AAHFK5394AX
GSTN No.	27AAHFK5394A1ZC
FOUNDRY AREA	22000 Sq. Ft.
IN HOUSE M/c SHOP AREA	3000 Sq. Ft.
ELECTRICITY LOAD	600 KVA
TOTAL MANPOWER	75 Skilled
INSTALLED CAPACITY	450 MT per month
CURRENT UTILIZATION	150 MT per
AVAILABLE CAPACITY	300 MT per
SISTER CONCERN	Shramik Industries (Machine Shop)
ADDRESS	R. S. No. 586/1 MIDC Shirol, Kolhapur, Opp. Sound Castings Pvt. Ltd. PIN 416122
BANKERS	State Bank of India Bank of Baroda The Kolhapur Urban Co-Op Bank Ltd.



ORGANISATION STRUCTURE





BRIEF HISTORY



- Our Engineering History Started 29 years ago in 1993, when our M.D Mr. Sanjay Bhagat ji started Machine Shop Business from Scratch with one Lathe M/C. Before moving into become an Entrepreneur he was working as a Conventional M/C Operator.



- Establishment of Foundry was done in 2005 between 5 Partners
- In 2012 Foundry was taken over by Mr. Sanjay Bhagat & started a new journey single handedly with a vision to build a organization that provides high class quality with effective cost.



- Started from Scratch, the Company has now Crossed a Turnover of Over INR 40Cr. (approx. 5 Million DOLLAR) in the year 2023-24 & is set to add new milestone



- Global leaders like Auma, Emerson, Shakti Pumps, Mahindra, Flash Electronics, Siemens have crowned Kohinoor group by off taking continuous supply of various critical castings





EVOLUTION IN MACHINES & TECHNOLOGY

- 2021** 2Nos New LMW Make CNC Machine added in Machining Facility.
- 2020** Microscope with Image Analyzer Added in Foundry Inspection Lab Facility.
- 2019**
 - 1) Fully Automatic Sand Plant with 60MT Hopper & 15MT Capacity Cooler
 - 2) Arpa 450 with Box size 24"x28"
 - 3) Arpa 300 with Box size 20"x22" were Installed
- 2018** 18 Element Spectrometer Installed Foundry Lab Facility (Make- Bruker)
- 2017** 550 Kg Induction Furnace installed (550 KW, Make- Inductotherm)
- 2016** 5th CNC Machine, New Trun Mill Center, 2nos 4th Axis VMC Machine Installed
- 2015** 4th CNC Machine Added
- 2014** 3rd CNC Machine Installed
- 2013** Machining Facility installed with installation 2nos CNC & 1nos VMC Machines
- 2012** Semi Sand Plant & 300Kg Shot Blasting Machine Installed
- 2009** Pneumatic Molding M/C & Intensive Sand Mixer for Sand &Molding Quality
- 2005** Foundry with Pin lift Molding Machine & Manual process established



CORE VALUES





#foundry

FOUNDRY FACILITIES

FOUNDRY FACILITIES

INDUCTION FURNACE - INDUCTOTHERM MAKE
500 KG, 550 KW

FULLY AUTOMATIC SAND PLANT WITH AUTO
BENTONITE & COALBOND ADDITION

500 KG INTENSIVE SAND MIXER - 1 NOS.

PNEUMATIC MOULDING M/C ARPA 450

PNEUMATIC MOULDING M/C ARPA 300

INHOUSE- SAND TESTING LAB

SPECTROMETER (MAKE BRUKER)

MICROSCOPE WITH IMAGE ANALYZER

SHOT BLASTING MACHINE 300KG

INHOUSE- PAINTING FACILITY

AIR COMPRESSOR - 3 NOS. - 20HP, 10HP, 30HP

C. E. METER FERROLAB

BRINELL HARDNESS TESTER

EXPERIENCED HAND GRINDER OPERATOR TEAM





INSPECTION LAB





CASTING DETAILS

CAST IRON GRADES	SG IRON GRADES	CASTING WEIGHTS
FG-200	SGI-400/10	Lowest Weight : 0.500 Kg
FG-220	SGI-400/12	Highest Weight : 85 Kg
FG-250	SGI-400/15	
FG-260	SGI-500/7	
FG-300	SGI-600/3	
	SGI- 700/2	
	SGI- 700/3	

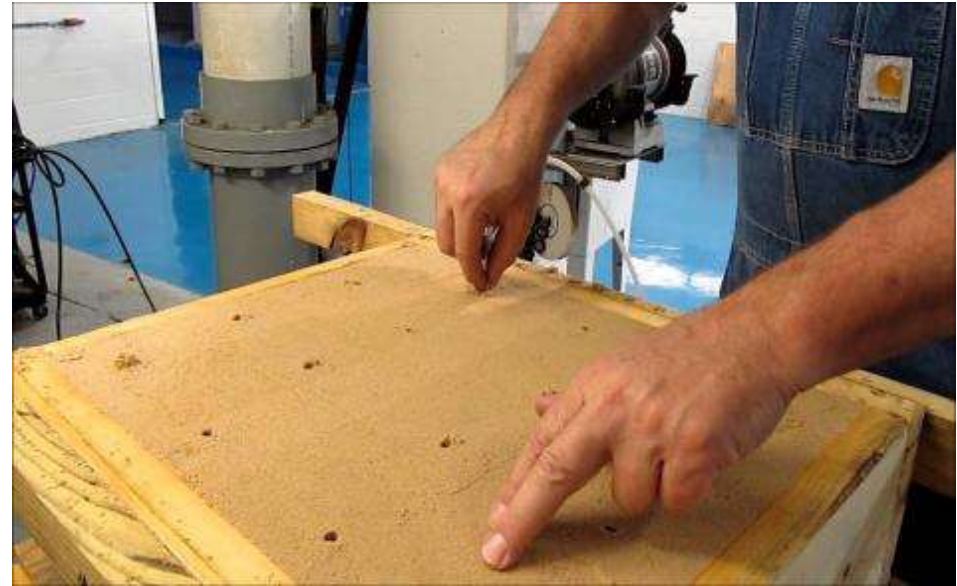


GREEN SAND MOLDING SETUP





SHELL MOLDING & CO2 MOLDING SETUP





Machine Shop

advance machining



We have conventional machining facilities as well as advance CNC manufacturing facilities in order to have flexible manufacturing system to ensure consistent quality.



MACHINE SHOP FACILITIES

We are well equipped with sophisticated production machineries like VMC's, SPM's, CNC turning centers, Turn Mill Center, VMC with Fourth Axis to cater the customer demands in terms of Quality & Quantity.

MACHINE NAME

QTY.

VMC BED SIZE - 1000x800x500 BFW MAKE 1 NOS.

VMC BED SIZE - 600x400x400 with 4th AXIS 2 NOS.

CNC TURNING CENTER 250X500 mm 8 NOS.

CNC TURN MILL CENTER 350 mm Chuk Dia 1 NOS.

LATHE MACHINE HEAVY DUTY 7FT 10 NOS.

LATHE MACHINE HEAVY DUTY 4½ FT 1 NOS.

UNIVERSAL MILLING MACHINE SPM 1 NOS.

HEAVY DUTY DRILLING MACHINE 38 mm 1 NOS.

TAP FAST 16 mm 8 NOS.

PILLER DRILL MACHINE 25 mm 1 NOS.

VTL 500mm MACHINE 1 NOS.

CMM INSPECTION M/C 1 NOS.

HMC MACHINE 1 NOS.





MACHINE SHOP FACILITIES

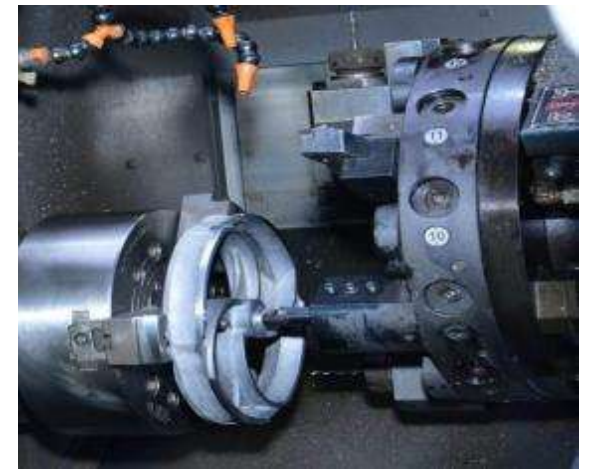
We are well equipped with sophisticated production machineries like VMC's, SPM's, CNC turning centers, Turn Mill Center, VMC with Fourth Axis to cater the customer demands in terms of Quality & Quantity.



MACHINE NAME	QTY.
VMC BED SIZE - 1000x800x500 BFW MAKE	1 NOS.
VMC BED SIZE - 600x400x400 with 4th AXIS	2 NOS.
CNC TURNING CENTER 250X500 mm	8 NOS.
CNC TURN MILL CENTER 350 mm Chuk Dia	1 NOS.
LATHE MACHINE HEAVY DUTY 7FT	10 NOS.
LATHE MACHINE HEAVY DUTY 4½ FT	1 NOS.
UNIVERSAL MILLING MACHINE SPM	1 NOS.
HEAVY DUTY DRILLING MACHINE 38 mm	1 NOS.
TAP FAST 16 mm	8 NOS.
PILLER DRILL MACHINE 25 mm	1 NOS.
VTL 500mm MACHINE	1 NOS.
CMM INSPECTION M/C	1 NOS.
HMC MACHINE	1 NOS.



MACHINE SHOP SETUP





INHOUSE- ADVANCED MACHINING SET-UP





PRODUCT- PORTFOLIO





SG IRON PRODUCTS






Customers

customer relationship

We at Kohinoor pride ourselves on meeting the commitments we make with honesty and personal responsibility. We demand the highest standards for ourselves individually and on a corporate level. We consider our Integrity in all areas of our business to be of utmost importance for our customers.



Weekly Project Status Update											Revision: 01
Customer Name	ABC				Project No.	P000					
Plant/ Site Name	Housing				Project Start Date	14 Jun 19					
Plant/ Site No. & (Site No.)	115451202				Original Est.	20 Aug 19					
Buyer Name & Contact No.	MIE. Anil				Schedule (PO) Qty	18					
ACT/ Project Leader Name & (Contact No.)	Mr. Khedkar (9849003461)				Status as on	13 Jul 19					
Weekend Qty	MTS	MTS	MTS	MTS	MTS	MTS	MTS	MTS	MTS	MTS	MTS
Days	Y	E	Tu	W	Th	Fr	Sa	Su	Mo	Tu	W
Start	13 Jun 19	18 Jun 19	23 Jun 19	30 Jun 19	07 Jul 19	14 Jul 19	21 Jul 19	28 Jul 19	04 Aug 19	11 Aug 19	18 Aug 19
End	19 Jun 19	25 Jun 19	01 Jul 19	08 Jul 19	15 Jul 19	22 Jul 19	29 Jul 19	05 Aug 19	12 Aug 19	19 Aug 19	26 Aug 19
Status	Green	Green	Green	Green	Green	Green	Yellow	Red	Red	Red	Red
Actual completion date	17 Jun 19	24 Jun 19	01 Jul 19	08 Jul 19	15 Jul 19	22 Jul 19	29 Jul 19	05 Aug 19	12 Aug 19	19 Aug 19	26 Aug 19
Remarks	Only										

Weekly status update to customers

At Kohinoor, we lay a great emphasis on adherence to professional practices throughout the project life cycle. This helps our customers in quickly tracking the project status.



EXPORT CUSTOMERS





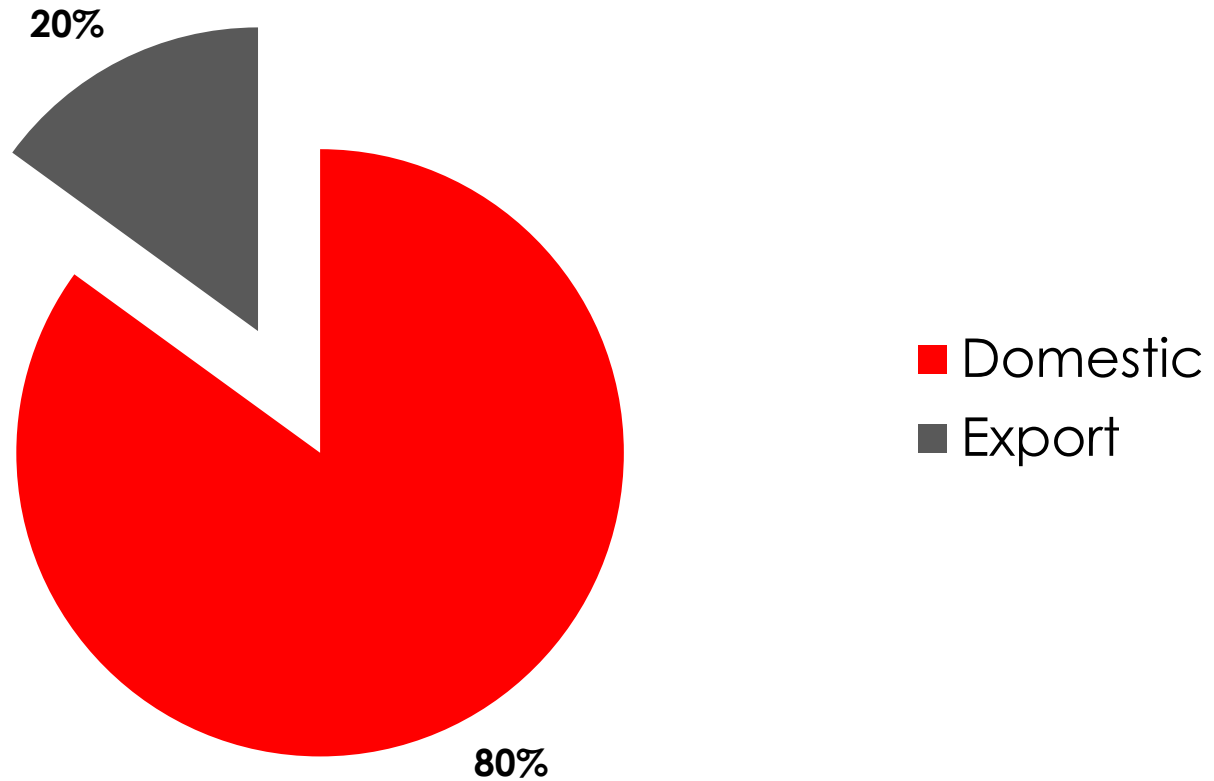
DOMESTIC CUSTOMERS





Sales Turnover

Domestic Vs. Export Sales FY 2021-22



www.kohinoormetallica.com



Social Activities



Blood Donation Camp



Tree Plantation Drive



Free Health Checkup



Ventilator Machine Donation in the Pandemic



Donation to Orphanage



EXPANSION PLANS FOR FY 22-23 & FY 23-24

SR. NO.	PROJECT	Target	Area	Status
1.	Development of the Corporate Office with facilities for conferencing.	April '22	Office & Administration (Completed)	Completed
2.	Up gradation of Sand testing lab by adding Atomized Instruments.	Nov'22	Foundry-Quality	Completed
3.	Centralization of our 3 Machining Units under 1 Roof	Mar'23	Machine Shop - Prod	Completed
4.	Expansion of Machining Capacity by installing VTL & HMC Machine	Dec'23	Machine Shop - Prod	VTL & HMC M/C Installed
5.	CMM addition in Machine Shop	JAN'24	Machine Shop-Quality	CMM M/C Installed
6.	Upgrading the Foundry Facilities by installing in-house Core Shooter Machines	April'24	Foundry- Prod	Inprocess
7.	1.3 MW Solar Power Project, in Malegoan, Nashik District.	OCT'24	Malegoan, Nashik Dist.	PO processed



EXPANSION PLANS FOR FY 22-23 & FY 23-24

1.3 MW SOLAR POWER PROJECT:

LOCATION: NASHIK DIST.



**AREA SIZE:
1,26,000 Sq. Ft.**



KOHINOOR METALLICS

PLOT NO. 31, MIDC SHIROLI,
OPP. STATE BANK OF INDIA, KOLHAPUR,
(MAHARSHTRA) INDIA. 416122

Email: kohinoormetallics@gmail.com

Email: shramik8@gmail.com

Contact: + 91- 9922571999

Contact: + 91- 9763707796

www.kohinoormetallics.com



THANK YOU

LOGICON
PVT. LTD.